

Vintage Collection

NAPA

Modular laminate casegoods provide extensive selection, capability and value. Enter Napa in both Cherry and Mahogany laminates with impact-resistant 3mm PVC edges with wood grain design and tri-groove design detail. From executive and management offices to task environments and high-density areas, Napa excels for today's businesses.



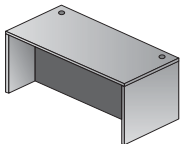
Corporate Office and Warehouse

P.O. Box 3520, Ontario, CA 91761

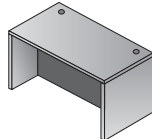
909-930-2000 • 800-950-7262 (outside CA)

909-930-5349 Fax

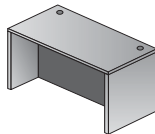
www.officestar.net



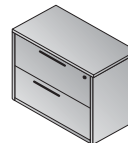
NAPA01
Desk Shell
71"x36"x29"
CU:6.4 WT:162.0



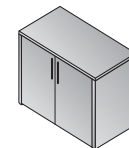
NAP02
Desk Shell
66"x30"x29"
CU:5.1 WT:135.6



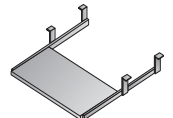
NAP03
Desk Shell
60"x30"x29"
CU:4.6 WT:127.9



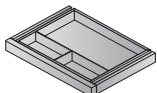
NAP12
Lateral File
36"x22"x29"
CU:16.5 WT:149.9
Ships Assembled



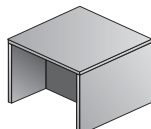
NAP13
Storage Cabinet
36"x22"x29"
CU:4.8 WT:117.9



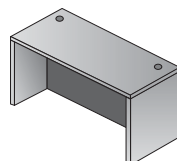
NAP14
Keyboard Tray
26"x12"
CU:0.6 WT:13.2



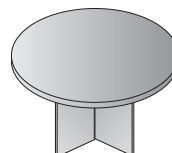
NAP15
Center Drawer
20"x15"
CU:0.7 WT:8.8



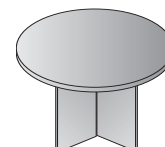
NAP20
End Table
24"x24"x20"
CU:2.0 WT:49.6



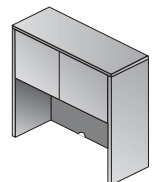
NAP21
Desk Shell
48"x30"x29"
CU:4.8 WT:110.2



NAP23
RoundTable
47"Dia.x29"H
CU:6.8 WT:109.1

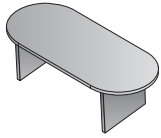


NAP27
RoundTable
42"Dia.x29"H
CU:5.4 WT:94.8

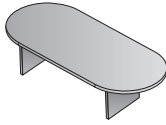


NAP34
Hutch with Doors
48"x15"x36"
CU:4.9 WT:101.4

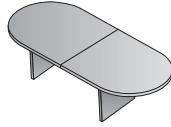
NAPA



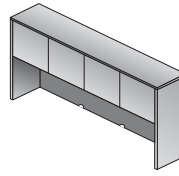
NAP35
Conference Table
71"x35"x29"
CU:6.7 WT:138.9



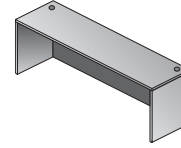
NAP36
Conference Table
95"x44"x29"
CU:10.8 WT:189.6



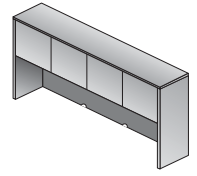
NAP37
Conference Table
120"x48"x29"
CU:11.3 WT:246.9



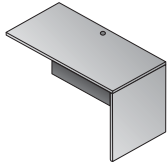
NAP40
Part Assembled Hutch
71"x15"x36"
CU:15.0 WT:150.0
Available June 2007



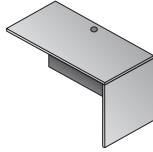
NAP43
Credenza Shell
71"x24"x29"
CU:5.1 WT:122.4



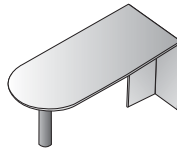
NAP44
Overhead Storage
71"x15"x36"
CU:6.9 WT:140.0



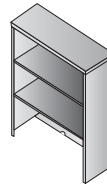
NAP45
Return Shell
48"x24"x29"
CU:3.5 WT:90.4



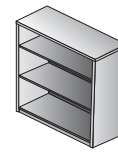
NAP46
Return Shell
42"x20"x29"
CU:3.1 WT:88.2



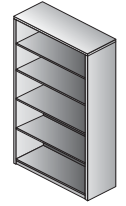
NAP47
Bullet
71"x36"x29"
CU:6.6 WT:116.8



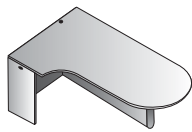
NAP53
Open Hutch
36"x14"x36"
CU:3.7 WT:81.6



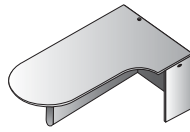
NAP55
3-Shelf Bookcase
36"x14"x42"
CU:4.2 WT:98.1



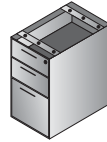
NAP56
5-Shelf Bookcase
36"x14"x65"
CU:6.6 WT:149.9



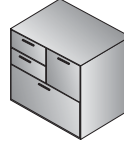
NAP57L
Left Computer Corner Bullet
71"x30"/42"x29"
CU:8.2 WT:145.5



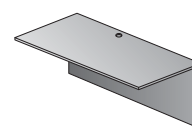
NAP57R
Right Computer Corner Bullet
71"x30"/42"x29"
CU:8.2 WT:145.5



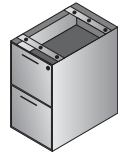
NAP65
BBF Ped-Desk
15.5"x22"x28"
CU:7.6 WT:78.3



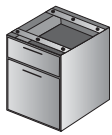
NAP69
MultiFile Ped
31"x23"x29"
CU:14.2 WT:154.3



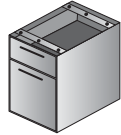
NAP70
Bridge
48"x24"x29"
CU:2.8 WT:70.5



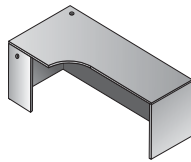
NAP74
FF Ped-Desk
15.5"x22"x28"
CU:7.6 WT:73.9



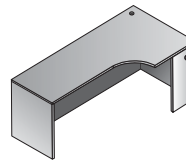
NAP76
Hanging Ped-20" Return
15.5"x18.5"x21"
CU:4.9 WT:50.7



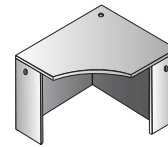
NAP80
Hanging Ped-Desk
15.5"x22"x21"
CU:5.8 WT:60.6



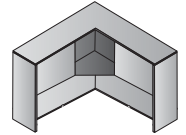
NAP82L
Left Corner Credenza
71"x36"x29"
CU:6.4 WT:148.8



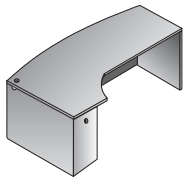
NAP82R
Right Corner Credenza
71"x36"x29"
CU:6.4 WT:148.8



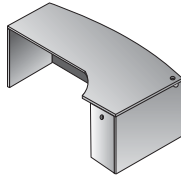
NAP83
Corner Unit
42"x42"x29"
CU:5.0 WT:125.7



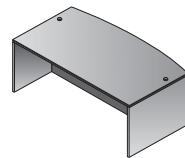
NAP84
Corner Hutch
42"x42"x36"
CU:7.1 WT:142.2



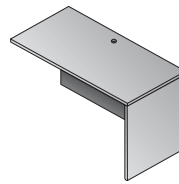
NAP87L
Left Corner Desk
71"x30"/48"x29"
CU:8.4 WT:184.1



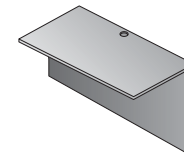
NAP87R
Right Corner Desk
71"x30"/48"x29"
CU:8.4 WT:184.1



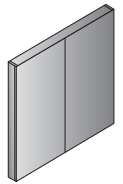
NAP89
Bow Desk Shell
72"x41"x29"
CU:7.3 WT:173.1



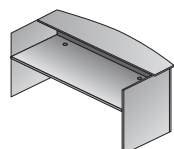
NAP92
Return Shell
35"x24"x29"
CU:2.7 WT:73.9



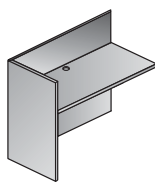
NAP93
Bridge
35"x24"x29"
CU:2.1 WT:56.2



NAP100
Presentation Board
48"x48"
CU:9.6 WT:101.4
Ships Assembled



NAP122
Reception Desk Shell
71"x30"/36"x42"
CU:8.3 WT:207.2



NAP125
Reception Return Shell
42"x24"x41"
CU:4.1 WT:100.3

Finish Key
CHY - Cherry Finish
MAH - Mahogany Finish